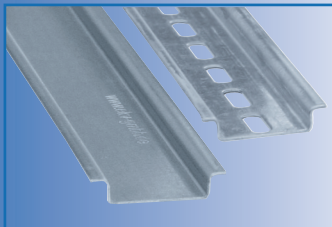


# DIN-Profileschienen

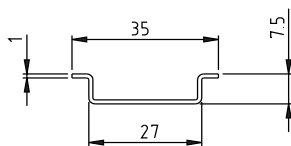
## Hutprofile mit einer Länge von 2 Metern

### Profil 35 x 7,5

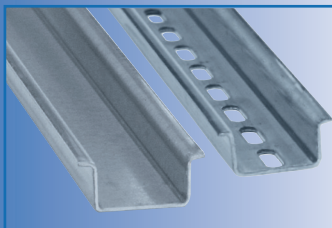


nach EN 60715

Oberfläche		Lochung		Artikelnummer	VPE
verzinkt	chromatiert*	ungelocht	Typ		
x		x		3575ZU	80m
	x	x		3575CRU	80m
x			A	3575ZG	80m
x			B	3575ZG-M6	80m
x			C	3575ZG-WM	80m
	x		A	3575CRG	80m
	x		B	3575CRG-M6	80m
	x		C	3575CRG-WM	80m

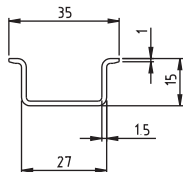


### Profil 35 x 15

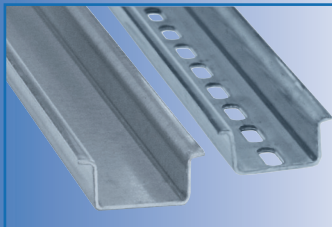


nach EN 60715

x		x		3515ZU	40m
	x	x		3515CRU	40m
x			A	3515ZG	40m
x			B	3515ZG-M6	40m
x			C	3515ZG-WM	40m
	x		A	3515CRG	40m
	x		B	3515CRG-M6	40m
	x		C	3515CRG-WM	40m

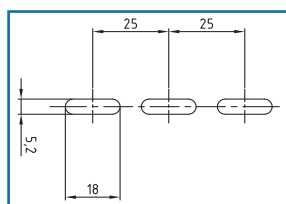
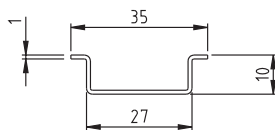


### Profil 35 x 10

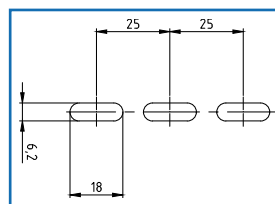


nach EN 60715

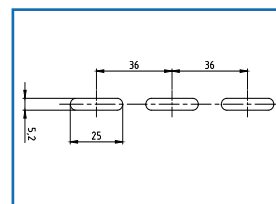
x		x		3510ZU	60m
	x	x		3510CRU	60m
x			A	3510ZG	60m
	x		A	3510CRG	60m



Lochung A



Lochung Typ B



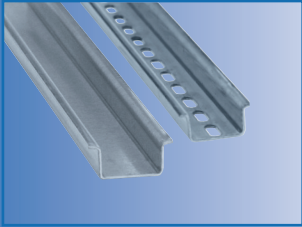
Lochung Typ C

\*chromatiert chrom 6 frei gemäß RoHS

# DIN-Profilschienen

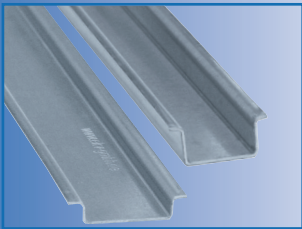
## Hutprofile mit einer Länge von 2 Metern

Profil 15 x 5,5



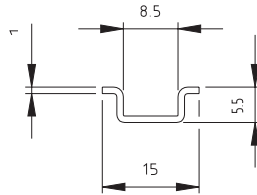
nach EN 60715

Profil 35 x 7,5 und  
Profil 35 x 15

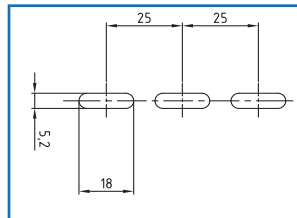
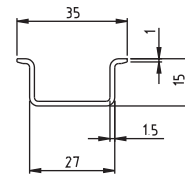
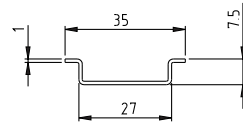


nach EN 60715

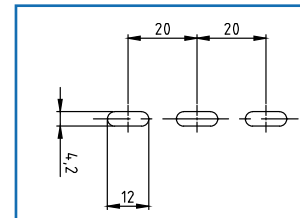
Oberfläche		Lochung		Artikel- nummer	VPE
verzinkt	chromatiert*	ungelocht	Typ		
x		x		1555ZU	80m
	x	x		1555CRU	80m
x			D	1555ZG	80m
	x		D	1555CRG	80m



V2A Edelstahl	ungelocht	Typ	
x	x		3575V2AU 80
x	x		3515V2AU 40
x		A	3575V2AG 80
x		A	3515V2AG 40



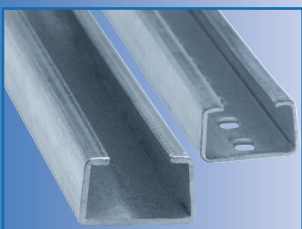
Lochung A



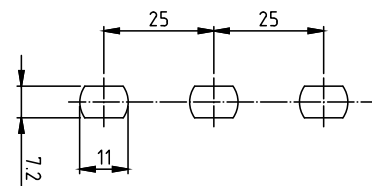
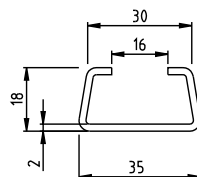
Lochung D

## C-Profilschienen mit einer Länge von 2 Metern

Profil 35 x 18



Oberfläche		Lochung		Artikel- nummer	VPE
verzinkt	chromatiert*	ungelocht	gelocht		
x		x		3518ZU	20m
x			x	3518ZG	20m

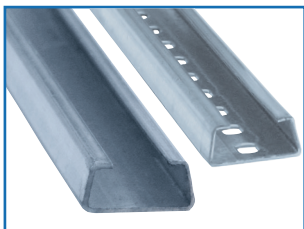


\*chromatiert chrom 6 frei gemäß RoHS

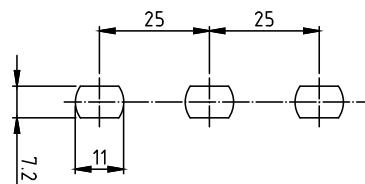
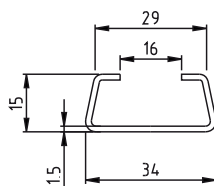
# DIN-Profileschienen

## C-Profileschienen mit einer Länge von 2 Metern

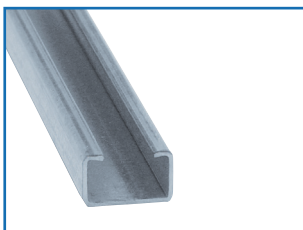
Profil 34 x 15



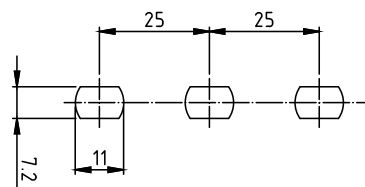
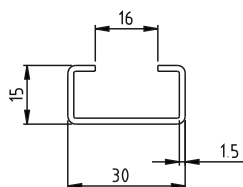
Oberfläche		Lochung		Artikelnummer	VPE
verzinkt	chromatiert*	ungelocht	gelocht		
x		x		3415ZU	40m
x			x	3415ZG	40m



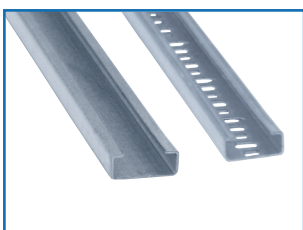
Profil 30 x 15



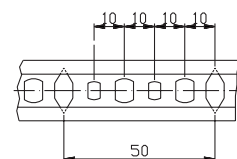
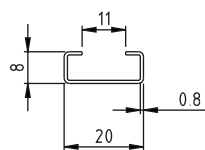
x		x		3015ZU	40m
	x	x		3015CRU	40m
x			x	3015ZG	40m
	x		x	3015CRG	40m



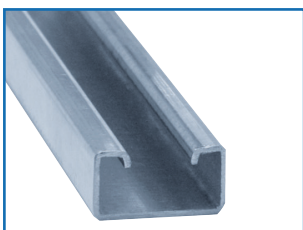
Profil 20 x 8



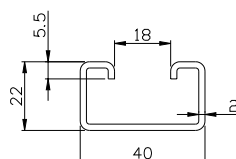
x		x		2008ZU	48m
x			x	2008ZG	48m



Profil 40 x 22



x		x		4022ZU	20m
	x	x		4022CRU	20m

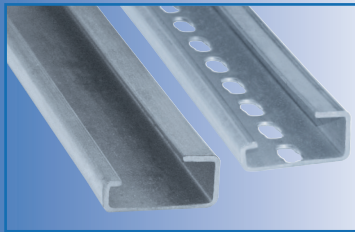


\*chromatiert chrom 6 frei gemäß RoHS

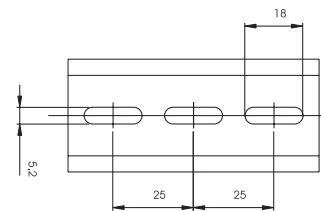
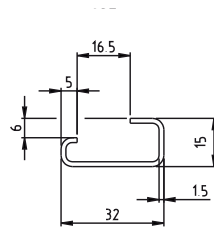
# DIN-Profilschienen

G-Profilschienen mit einer Länge von 2 Metern

Profil 32 x 15



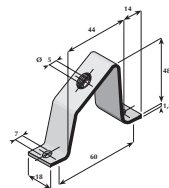
Oberfläche		Lochung		Artikelnummer	VPE
verzinkt	chromatiert*	ungelocht	gelocht		
x		x		3215GZU	40m
	x	x		3215GCRU	40m
x			x	3215GZG	40m
	x		x	3215GCRG	40m



\*chromatiert chrom 6 frei gemäß RoHS

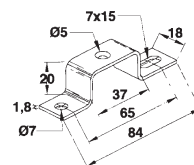
## Zubehör

Schrägmontagewinkel



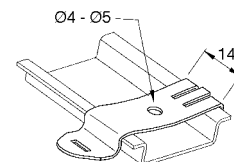
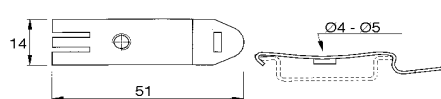
Artikelnummer	Gewinde	VPE Stück
9000-20M5	M5	50
9000-20M6	M6	50

Abstandhalter



9002-20M5	M5	50
9002-20M6	M6	50

FIX-Clip



3402104	M4	100
3402105	M5	100

Sämtliche Schienen sind auch in Eisenblank auf Anfrage lieferbar.

Schienen mit längeren Abmessungen auf Anfrage.

Gerne längen wir Ihnen die Profile auch auf Sonderlängen ab.

Sonderanfertigungen mit besonderen Bohrungen möglich.

**EKV GmbH**

Winzenheimer Straße 30  
55559 Bretzenheim Germany  
Telefon: +49(0)671-920280-0  
Telefax: +49(0)671-920280-55  
Internet: www.ekv-gmbh.de  
E-Mail: info@ekv-gmbh.de